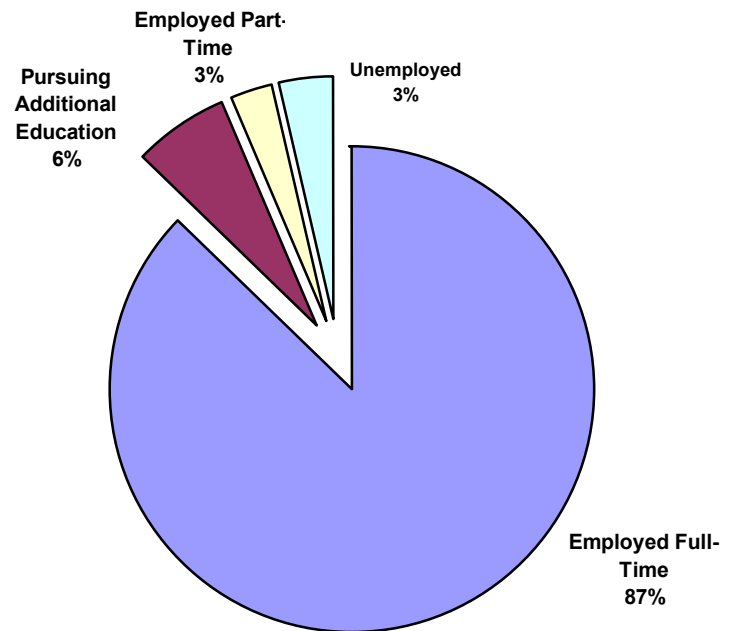


POST-GRADUATION ACTIVITIES

GRADUATE SCHOOL CLASS OF 2001

The Career Services Office conducts an annual follow-up survey of The University of Scranton graduates to determine the post-graduation status of this population. This four-page publication serves as an executive summary of the survey findings. Actual placements with employers and graduate or professional schools can be identified in a full report available in the Career Services Office.

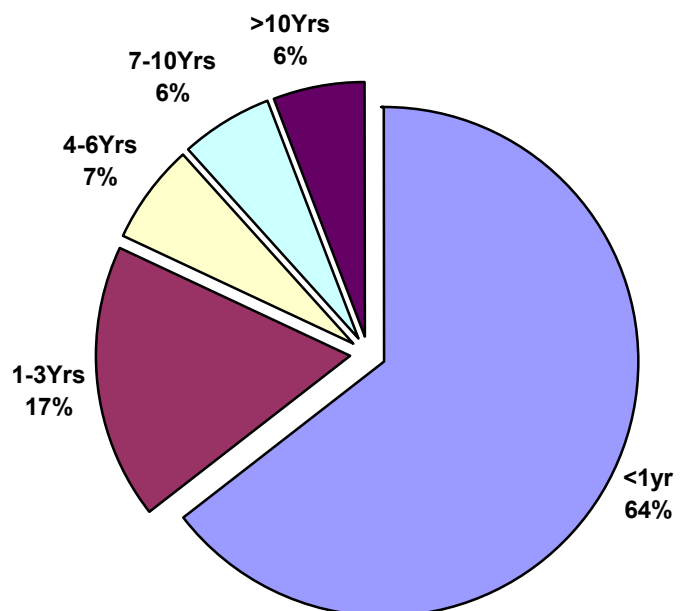
Post Graduation Activities



HIGHLIGHTS OF THE 2001 REPORT

- 247 students completed master's degree requirements in 2001
- 70% (N=172) of the Class of 2001 provided placement information
- 97% of the respondents were either employed or pursuing additional education full-time
- 87% of the respondents were employed full-time
- The average salary reported for 2001 graduates was \$44,231, (99 salaries reported)
- 83% of the graduates employed full-time were working in Pennsylvania, New Jersey, and New York
- 6% (N=11) of the respondents were pursuing additional education full-time
- 64% of the graduates employed full-time are in jobs they have held for less than 1 year
- The unemployment rate for the Class of 2001 was 3%

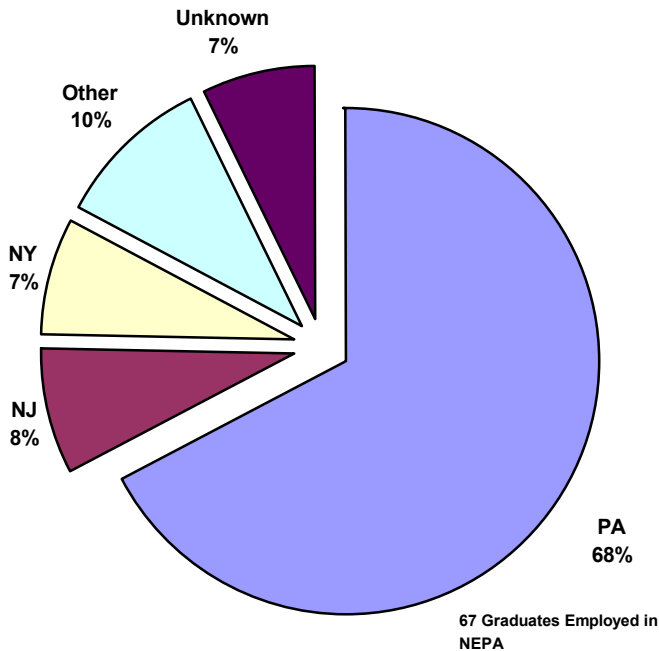
Length of Time in Present Job



Length of Time in Present Job

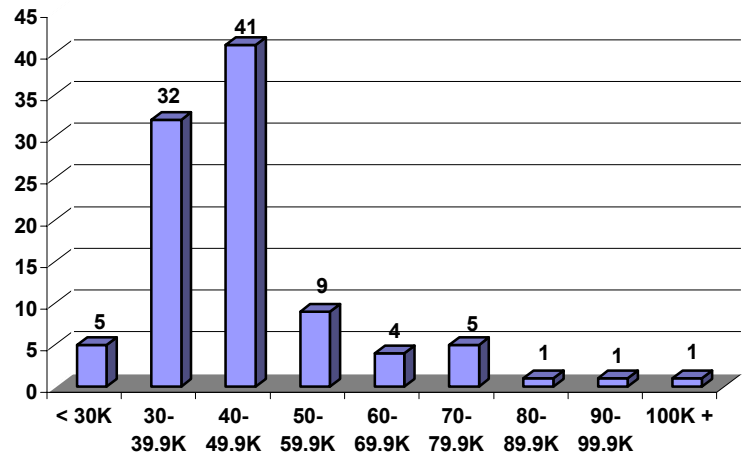
Almost two-thirds of the graduates employed full-time indicated they were working in their job for less than 1 year. Most (60%) of these graduates were Physical Therapists

Geographical Placements by State



Salary Information

Approximately 66% of the graduates employed full-time provided salary information. The average salary for 2001 graduates was \$44,231. The graph below indicates the number of salaries reported by 10K ranges.



Average Salaries by Program Class of 2001

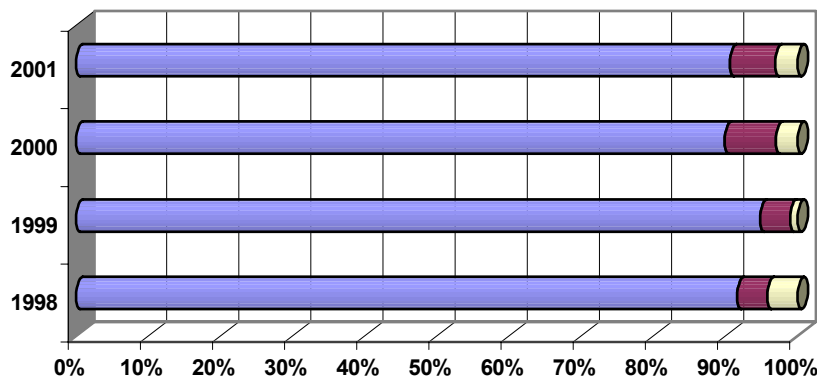
Major	Avg Salary	#	Major	Avg Salary	#
Accounting	\$42,667	3	Nursing	\$ 64,000	3
Chemistry	\$38,000	2	Operations Management	\$ 49,000	2
Community Counseling	\$37,333	3	Physical Therapy	\$ 43,355	32
Elementary Education	\$29,063	3	Reading Education	\$ 36,500	2
Finance	\$69,875	4	Rehabilitation Counseling	\$ 31,000	2
MBA General	\$67,500	2	School Counseling	\$ 34,930	8
Health Administration	\$62,500	4	Secondary Education	\$ 31,463	3
Human Resource Administration	\$39,429	16	Secondary School Administration	\$ 47,085	2
			Software Engineering	\$ 54,500	2

GRADUATES PURSUING ADDITIONAL EDUCATION

Eleven graduates indicated they were pursuing additional education on a full-time basis.

U of S Program	School/Location	Degree/Program
Accounting	Turku School of Economics Turku, Finland	Fullbright Fellowship
Biochemistry	Hershey Medical Center Hershey, PA	MD Medicine
	Temple University School of Dentistry Philadelphia, PA	DMD Dentistry
	University of Scranton Scranton, PA	MS Secondary Education
Chemistry	University of Scranton Scranton, PA	MBA
Elementary Education	Lehigh University Bethlehem, PA	MS Special Education
History	Lehigh University Bethlehem, PA	PhD American History
	Lehigh University Bethlehem, PA	PhD History
International Business	Hochschule Bremen Bremen, Germany	Fullbright
Physical Therapy	Jefferson Medical College Philadelphia, PA	MD Medicine
Secondary School Admin	Marywood University Scranton, PA	Doctoral Program

Post Graduation Status Trends (1998-2001)



	1998	1999	2000	2001
Unemployed	4%	1%	3%	3%
Additional Education	4%	4%	7%	6%
Employed Full-Time	88%	91%	89%	87%

The University of Scranton

Post-Graduation Status By Major

Class of 2001

MAJOR	# Grads	# Resp	% Resp	Post-Graduation Status			
				Add Educ	Full-Time	Part-Time	Unemployed
Accounting	6	4	67%	1	3	0	0
Biochemistry	12	11	92%	3	8	0	0
Chemistry	5	4	80%	1	3	0	0
Clinical Chemistry	2	2	100%	0	2	0	0
Community Counseling	11	3	27%	0	3	0	0
Elementary Education	6	5	83%	1	4	0	0
Elementary School Administration	4	2	50%	0	2	0	0
English	5	2	40%	0	1	0	1
Finance	18	6	33%	0	5	0	1
General-MBA	2	2	100%	0	2	0	0
Health Administration	10	7	70%	0	7	0	0
History	12	6	50%	2	3	0	1
Human Resource Administration	25	17	68%	0	17	0	0
International Business	5	3	60%	1	1	0	1
Management Info Systems	6	0	0%	0	0	0	0
Marketing	3	2	67%	0	2	0	0
Nursing	15	11	73%	0	8	3	0
Operations Management	4	2	50%	0	2	0	0
Physical Therapy	51	48	94%	1	46	1	0
Reading Education	6	5	83%	0	4	0	1
Rehabilitation Counseling	6	5	83%	0	3	1	1
School Counseling	13	11	85%	0	11	0	0
Secondary Education	10	7	70%	0	7	0	0
Secondary School Administration	4	4	100%	1	3	0	0
Software Engineering	4	2	50%	0	2	0	0
Theology	2	1	50%	0	1	0	0
Totals	247	172	70%	11	150	5	6
				6%	87%	3%	3%