



1976 (4-4)

Coach: Martha Jardine

1977 (8-3)

Coach: Donna Zimmerman

| Date | Royals | OPP | W/L |
|------|---------------|-----|-----|
| 7 | King's | 0 | W |
| 3 | Wilkes | 4 | L |
| 5 | Lycoming | 2 | W |
| 7 | Misericordia | 0 | W |
| 1 | Wilkes | 6 | L |
| 4 | King's | 3 | W |
| 5 | Baptist Bible | 2 | W |
| 3 | Marywood | 4 | L |
| 5 | Marywood | 2 | W |
| 6 | Misericordia | 1 | W |
| 8 | Mansfield | 1 | W |

1978 (12-3)

Coach: Donna Zimmerman

| Date | Royals | OPP | W/L |
|------|---------------|-----|-----|
| 6 | FDU-Teaneck | 3 | W |
| 6 | King's | 1 | W |
| 7 | Baptist Bible | 0 | W |
| 7 | Kutztown | 2 | W |
| 5 | King's | 2 | W |
| 7 | Lycoming | 0 | W |
| 6 | Elmira | 1 | W |
| 7 | Wilkes | 0 | W |
| 5 | Misericordia | 2 | W |
| 7 | Marywood | 0 | W |
| 0 | Seton Hall | 9 | L |
| 1 | Oneonta St. | 8 | L |
| 8 | Mansfield | 1 | W |
| 6 | Wilkes | 1 | W |
| 3 | Marywood | 4 | L |

1979 (9-2/*6-0 Middle Atlantic Conference)

Coach: Donna Zimmerman

| Date | Royals | OPP | W/L |
|------|---------------|-----|-----|
| 7 | *Wilkes | 0 | W |
| 1 | Oneonta St. | 6 | L |
| 7 | *King's | 0 | W |
| 3 | Kutztown | 2 | W |
| 5 | *King's | 2 | W |
| 6 | *Lycoming | 1 | W |
| 6 | Baptist Bible | 1 | W |
| 7 | *Wilkes | 0 | W |
| 7 | Misericordia | 0 | W |
| 2 | Marywood | 5 | L |
| 4 | *Upsala | 3 | W |

1980 (9-3)

Coach: Lynn Shope

| Date | Royals | OPP | W/L |
|------|---------------|-----|-----|
| 9 | Broome | 0 | W |
| 9 | Baptist Bible | 0 | W |
| 9 | Wilkes | 0 | W |
| 9 | King's | 0 | W |
| 6 | Misericordia | 0 | W |
| 6 | King's | 0 | W |
| 8 | Upsala | 1 | W |
| 5 | Lycoming | 2 | W |
| 9 | Wilkes | 0 | W |
| 3 | Marywood | 6 | L |
| 1 | Bloomsburg | 8 | L |
| 1 | Swarthmore | 8 | L |

1981 (6-4)

Coach: Lynn Shope

1982 (9-5)

Coach: Linda Brownell

Please note: women's tennis switched to spring competition during the 1983-84 academic year

1984 (7-1-1/*6-0 Middle Atlantic Conference)

Coach: Linda Brownell

| Date | Royals | OPP | W/L |
|------|-------------------|-----|-----|
| 4 | Mansfield (draw) | 2 | T |
| 6 | *Wilkes | 3 | W |
| 7 | *King's | 1 | W |
| 9 | *King's | 0 | W |
| 2 | East Stroudsburg | 7 | L |
| 8 | *Lycoming | 1 | W |
| 8 | *Wilkes | 1 | W |
| 5 | Marywood | 4 | W |
| 9 | *Upsala (forfeit) | 0 | W |

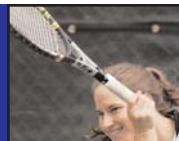
1985 (0-6/0-5 MAC Northwest League)

Coach: Joe Schirra

1986 (6-5/4-1 MAC Northwest League)

Coach: Joe Schirra

| Date | Royals | OPP | W/L |
|------|--------------|-----|-----|
| 0 | Muhlenberg | 9 | L |
| 6 | Drew | 3 | W |
| 7 | *King's | 2 | W |
| 6 | *Susquehanna | 3 | W |
| 7 | *Lycoming | 2 | W |
| 8 | *King's | 1 | W |
| 6 | *Juniata | 3 | W |
| 4 | Marywood | 5 | L |
| 1 | Bloomsburg | 8 | L |
| 4 | *Wilkes | 5 | L |
| 1 | ^Muhlenberg | 8 | L |



^MAC Northern Division Championship Match

2 ^Muhlenberg 7 L

1987 (8-6/*4-0 MAC Northwest League)

Coach: Joe Schirra

| Date | Royals | OPP | W/L |
|------|---------------|-----|-----|
| 0 | Muhlenberg | 9 | L |
| 6 | *King's | 3 | W |
| 7 | Bryn Mawr | 2 | W |
| 3 | Drew | 6 | L |
| 7 | *King's | 2 | W |
| 6 | *Lycoming | 3 | W |
| 7 | *Juniata | 2 | W |
| 5 | *Susquehanna | 4 | W |
| 7 | Bloomsburg | 2 | W |
| 4 | Marywood | 5 | L |
| 6 | FDU-Madison | 3 | W |
| 4 | Bryn Mawr | 5 | L |
| 3 | Elizabethtown | 6 | L |
| 2 | ^Muhlenberg | 7 | L |

^MAC Northern Division Championship Match

1990 (10-5/*6-0 MAC Northwest League)

Coach: Doug Brickel

| Date | Royals | OPP | W/L |
|------|---------------|-----|-----|
| 7 | Muhlenberg | 2 | W |
| 9 | *King's | 0 | W |
| 7 | *Lycoming | 2 | W |
| 8 | *Juniata | 1 | W |
| 9 | *Wilkes | 0 | W |
| 5 | Drew | 4 | W |
| 8 | *Susquehanna | 1 | W |
| 3 | King's | 6 | L |
| 6 | *FDU-Madison | 3 | W |
| 4 | Elizabethtown | 5 | L |
| 8 | &Drew | 1 | W |
| 2 | @F&M | 7 | L |

^MAC Northern Division Championship Match

&MAC Northern Division Championship Match

@MAC Overall Championship Match

Editor's Note: Scranton played King's twice this year; it is not known which match is considered the league match.

1988 (5-6/*4-1 MAC Northwest League)

Coach: Joe Schirra

| Date | Royals | OPP | W/L |
|------|--------------|-----|-----|
| 6 | *King's | 3 | W |
| 2 | Bryn Mawr | 7 | L |
| 3 | Muhlenberg | 6 | L |
| 4 | Drew | 5 | L |
| 7 | *King's | 2 | W |
| 6 | *Lycoming | 3 | W |
| 6 | *Juniata | 3 | W |
| 5 | *Wilkes | 4 | W |
| 4 | *Susquehanna | 5 | L |
| 4 | Marywood | 5 | L |
| 4 | Wilkes | 5 | L |

1991 (9-3/3-2 *MAC Northwest League)

Coach: Doug Brickel

| Date | Royals | OPP | W/L |
|------|------------------|-----|-----|
| 8 | Muhlenberg | 1 | W |
| 4 | *Lycoming | 5 | L |
| 7 | *Juniata | 2 | W |
| 9 | *Wilkes | 0 | W |
| 7 | *King's | 2 | W |
| 9 | FDU-Madison | 0 | W |
| 9 | *Messiah | 0 | W |
| 6 | Moravian | 3 | W |
| 7 | East Stroudsburg | 2 | W |
| 1 | Bloomsburg | 8 | L |
| 2 | Elizabethtown | 7 | L |
| 9 | Marywood | 0 | W |

Editor's Note: Scranton played King's twice this year; it is not known which match is considered the league match.

1992 (14-1/*6-0 MAC Northwest League)

Coach: Doug Brickel

| Date | Royals | OPP | W/L |
|------|------------------|-----|-----|
| 6 | Marywood | 3 | W |
| 9 | East Stroudsburg | 0 | W |
| 7 | Bloomsburg | 2 | W |
| 5 | Muhlenberg | 4 | W |
| 5 | *Messiah | 4 | W |
| 9 | *Susquehanna | 0 | W |
| 8 | *Juniata | 1 | W |
| 8 | King's | 1 | W |
| 9 | Drew | 0 | W |
| 6 | *Wilkes | 3 | W |
| 9 | *King's | 0 | W |
| 6 | *Lycoming | 3 | W |
| 7 | &Muhlenberg | 1 | W |

1989 (8-2/*6-0 MAC Northwest League)

Coach: Doug Brickel

| Date | Royals | OPP | W/L |
|------|--------------|-----|-----|
| 4 | Muhlenberg | 5 | L |
| 8 | *King's | 1 | W |
| 9 | *Lycoming | 0 | W |
| 6 | *Juniata | 3 | W |
| 7 | *Wilkes | 2 | W |
| 7 | *Susquehanna | 2 | W |
| 5 | Bryn Mawr | 4 | W |
| 8 | *King's | 1 | W |
| 7 | FDU-Madison | 2 | W |



2 @Swarthmore 7 L

&MAC Northern Division Championship Match
@MAC Overall Championship Match

1993 (8-4/5-0 MAC Northwest League) Spring Results

Coach: Doug Brickel

| Date | Royals | OPP | W/L |
|------|------------------|-----|-----|
| 4 | East Stroudsburg | 5 | L |
| 7 | Marywood | 2 | W |
| 9 | *Susquehanna | 0 | W |
| 7 | King's | 2 | W |
| 8 | *Messiah | 1 | W |
| 8 | *Lycoming | 1 | W |
| 3 | Elizabethtown | 6 | L |
| 6 | *King's | 2 | W |
| 8 | *Juniata | 1 | W |
| 2 | Bloomsburg | 7 | L |
| 8 | \$Muhlenberg | 1 | W |
| 0 | @F&M | 9 | L |

\$MAC Northern Division Championship Match
@MAC Overall Championship Match

Please note: three results missing. Women's tennis switched back to fall competition during the 1993-94 academic year

1993 (11-2/*6-0 MAC Freedom League)

Coach: Doug Brickel

| Date | Royals | OPP | W/L |
|------|------------------|-----|-----|
| 7 | Marywood | 2 | W |
| 3 | Bloomsburg | 6 | L |
| 9 | Messiah | 0 | W |
| 6 | *Wilkes | 3 | W |
| 8 | East Stroudsburg | 1 | W |
| 6 | *King's | 3 | W |
| 7 | Susquehanna | 2 | W |
| 7 | Moravian | 2 | W |
| 9 | *FDU-Madison | 0 | W |
| 6 | *Lycoming | 3 | W |
| 9 | *Upsala | 0 | W |
| 4 | Elizabethtown | 5 | L |
| 5 | *Drew | 4 | W |

1994 (12-3/*5-1 MAC Freedom League)

Coach: Doug Brickel

| Date | Royals | OPP | W/L |
|------|------------------|-----|-----|
| S3 | 9 Messiah | 0 | W |
| S6 | 9 Marywood | 0 | W |
| S7 | 3 Rutgers-Newark | 6 | L |
| S13 | 8 *Wilkes | 1 | W |
| S20 | 4 *King's | 5 | L |
| S24 | 9 Susquehanna | 0 | W |
| S27 | 4 Moravian | 5 | L |
| S29 | 6 *Drew | 0 | W |

| | | | |
|-----|--------------------|---|---|
| O4 | 6 *Lycoming | 3 | W |
| O7 | 9 *FDU-Madison | 0 | W |
| O8 | 9 East Stroudsburg | 0 | W |
| O18 | 5 Elizabethtown | 4 | W |
| O19 | 6 *Upsala | 0 | W |
| O22 | 6 &Elizabethtown | 3 | W |
| 5 | @Moravian | 4 | W |

&MAC Tournament
@MAC Overall Championship Match

1995 (12-3/*5-0 MAC Freedom League)

Coach: Doug Brickel

| Date | Royals | OPP | W/L |
|------|------------------|-----|-----|
| 6 | Messiah | 1 | W |
| 6 | Rutgers-Newark | 3 | W |
| 1 | Bloomsburg | 8 | L |
| 5 | Elizabethtown | 4 | W |
| 8 | *FDU-Madison | 0 | W |
| 7 | *Lycoming | 2 | W |
| 7 | *King's | 2 | W |
| 8 | *Wilkes | 0 | W |
| 5 | Moravian | 4 | W |
| 3 | Vassar | 6 | L |
| 5 | *Drew | 4 | W |
| 7 | Marywood | 2 | W |
| 5 | East Stroudsburg | 0 | W |
| 7 | Susquehanna | 2 | W |
| 2 | \$Moravian | 7 | L |

\$MAC Tournament

1996 (8-4/*5-0 MAC Freedom League)

Coach: Mike Strong

| Date | Royals | OPP | W/L |
|------|------------------|-----|-----|
| 0 | Bloomsburg | 9 | L |
| 8 | East Stroudsburg | 1 | W |
| 6 | *King's | 3 | W |
| 9 | *Wilkes | 0 | W |
| 8 | *FDU-Madison | 1 | W |
| 1 | Moravian | 8 | L |
| 3 | Elizabethtown | 6 | L |
| 6 | *Lycoming | 3 | W |
| 5 | *Drew | 4 | W |
| 7 | Susquehanna | 1 | W |
| 5 | \$Elizabethtown | 4 | W |
| 0 | @Moravian | 9 | L |

\$MAC Tournament
@MAC Overall Championship Match

1997 (10-2/*5-1 MAC Freedom League)

Coach: Mike Strong

| Date | Royals | OPP | W/L |
|------|--------------|-----|-----|
| S8 | 9 *Allentown | 0 | W |

9

0

0

2

S

i

n

n

e

T

a

I

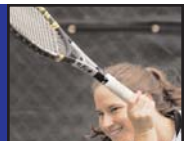
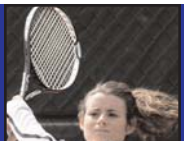
R



| | | | | |
|-----|-----|------------------|-----|---|
| S13 | 8 | Elizabethtown | 1 | W |
| S15 | 9 | East Stroudsburg | 0 | W |
| S16 | 8 | *King's | 1 | W |
| S19 | 6.5 | Muhlenberg | 2.5 | W |
| S20 | 8 | *FDU-Madison | 1 | W |
| S25 | 8 | *Wilkes | 1 | W |
| S27 | 5 | *Lycoming | 4 | W |
| O2 | 3 | Moravian | 6 | L |
| O6 | 7 | Marywood | 2 | W |
| O8 | 3 | *Drew | 5 | L |
| O14 | 8 | Susquehanna | 1 | W |

1998 (10-5/*5-1 MAC Freedom League)

Coach: ~~S20~~ 8 OS13 4O8CathoWilkes5(10)2nd placedonWlea(0)-3131.2O1cn(L)TJ6*(O14)-1881.3(8)-1368.8(SusTJsbu



2003 (11-5/*5-1 Freedom Conference)

Coach: Jane Johnson

| Date | Royals | OPP | W/L |
|------|--|-----|-----|
| A31 | 7 STEVENS TECH | 2 | W |
| S4 | 2 ELIZABETHTOWN | 6 | L |
| S6 | 5 *FDU-FLORHAM | 4 | W |
| S7 | 5 Elmira | 4 | W |
| S9 | 4 MORAVIAN | 5 | L |
| S17 | 8 *at Wilkes | 1 | W |
| S20 | 2 *at Drew | 7 | L |
| S21 | 8 at Mt. St. Mary-NY | 1 | W |
| S23 | 5 MESSIAH | 4 | W |
| S26 | 6 *KING'S | 3 | W |
| S27 | 2 at Susquehanna | 7 | L |
| S28 | 6 EAST STROUDSBURG | 3 | W |
| S30 | 7 *at DeSales | 2 | W |
| O1 | 6 *LYCOMING | 3 | W |
| O4 | at Capital Fall Tennis Classic (no team scoring) | | |
| O9 | 7 #at Messiah | 2 | W |
| O11 | 4 ^MORAVIAN | 5 | L |

#Middle Atlantic Conference Semifinals

^Middle Atlantic Conf. Championship

2004 (7-5/*5-1 Freedom Conference)

Coach: Jane Johnson

| Date | Royals | OPP | W/L |
|------|--------------------|-----|-----|
| S1 | 1 at Elizabethtown | 8 | L |
| S4 | 6 *at FDU-Florham | 3 | W |
| S7 | 1 at Moravian | 8 | L |
| S10 | 7 *at Lycoming | 2 | W |
| S15 | 9 *WILKES | 0 | W |
| S20 | 4 at Messiah | 5 | L |
| S23 | 7 *at King's | 2 | W |
| S27 | 5 *DREW | 4 | W |
| S30 | 4 *DeSALES | 5 | L |
| O6 | 5 #DeSALES | 4 | W |
| O9 | 3 ^DREW | 6 | L |
| O12 | 6 SUSQUEHANNA | 3 | W |

#Freedom Conference Tournament

^Freedom Conference Championship

2005 (10-3/*6-0 Freedom Conference)

Coach: Jack Lennox

| Date | Royals | Opp | W/L |
|------|------------------|-----|-----|
| S3 | 4 ELIZABETHTOWN | 5 | L |
| S6 | 3 MORAVIAN | 6 | L |
| S8 | 8 *KING'S | 1 | W |
| S10 | 6 at Susquehanna | 3 | W |
| S13 | 7 *at Drew | 2 | W |
| S14 | 6 at Marywood | 3 | W |
| S17 | 8 *LYCOMING | 1 | W |
| S21 | 5 *at Wilkes | 4 | W |

| | | | |
|-----|----------------|---|---|
| S24 | 6 MESSIAH | 3 | W |
| S27 | 6 *FDU-FLORHAM | 1 | W |
| O10 | 6 *DeSALES | 3 | W |
| O15 | 7 #DREW | 2 | W |
| O16 | 4 ^DeSALES | 5 | L |

#Freedom Conference Tournament

^Freedom Conference Championship

2006 (6-5/*4-2 Freedom Conference)

Coach: Elizabeth Steege

| Date | Royals | Opp | W/L |
|------|--------------------|-----|-----|
| S5 | 8 BAPTIST BIBLE | 1 | W |
| S10 | 1 at Elizabethtown | 8 | L |
| S12 | 6 *DREW | 3 | W |
| S16 | 6 *at FDU-Florham | 3 | W |
| 20 | 5 *at King's | 4 | W |
| S26 | 2 *WILKES | 7 | L |
| S30 | 5 *at Lycoming | 4 | W |
| O1 | 5 GWYNEDD-MERCY | 4 | W |
| O3 | 2 at Messiah | 7 | L |
| O7 | 1 *DeSALES | 8 | L |
| O14 | 1 #vs. DeSales | 5 | L |

#Freedom Conference Tournament

Please note: women's tennis switched from a fall sport to a spring sport during the 2007-2008 academic year

2008 (9-7/*5-1 Landmark Conference)

Coach: Elizabeth Steege

| Date | Royals | Opp | W/L |
|------|---------------------|-----|-----|
| S12 | 4 KING'S | 5 | L |
| S22 | 9 LYCOMING | 0 | W |
| S24 | 6 MESSIAH | 3 | W |
| M5 | 0 at Vassar | 9 | L |
| M24 | 5 *CATHOLIC | 4 | W |
| M26 | 3 at Lebanon Valley | 6 | L |
| M29 | 9 *at Susquehanna | 0 | W |
| A2 | 8 JUNIATA | 1 | W |
| A6 | 2 ELIZABETHTOWN | 7 | L |
| A9 | 2 *MORAVIAN | 7 | L |
| A12 | 5 *at Goucher | 4 | W |
| A14 | 3 EAST STROUDSBURG | 6 | L |
| A17 | 5 at DeSales | 4 | W |
| A19 | 7 *at Drew | 2 | W |
| A22 | 6 #CATHOLIC | 3 | W |
| A26 | 3 Sat Moravian | 6 | L |

#Landmark Conference Semifinals

§Landmark Conference Championship