



1968-69 (3-8)

Coach: John Hopkins

Date	Royals	OPP	W/L
15	Baptist Bible	24	L
11	Harpur	23	L
10	Wilkes (JV)	32	L
19	King's	18	W
9	East Stroudsburg (JV)	30	L
21	Susquehanna (JV)	14	W
6	Wilkes (JV)	29	L
9	Rider	24	L
17	E. Stroudsburg (JV)	12	W
14	King's	19	L
14	Baptist Bible	21	L

1969-70 (2-9)

Coach: John Hopkins

Date	Royals	OPP	W/L
8	King's	31	L
8	Moravian	38	L
26	Baptist Bible	15	W
14	Dickinson	30	L
12	Hartwick	24	L
29	Baptist Bible	15	W
8	Harpur	28	L
11	York	25	L
0	Lycoming	40	L
6	Rider	30	L
13	FDU-Madison	29	L

1970-71 (2-9-1)

Coach: John Hopkins

Date	Royals	OPP	W/L
15	FDU-Madison	27	L
13	Harpur	31	L
0	Susquehanna	36	L
14	Moravian	22	L
19	Dickinson	19	T
0	York	38	L
24	Baptist Bible	18	W
8	Muhlenburg	26	L
8	Lycoming	30	L
22	King's	15	W
17	Hartwick	20	L

1971-72 (3-8)

Coach: John Hopkins

Date	Royals	OPP	W/L
18	Susquehanna	22	L
12	Moravian	22	L
24	Baptist Bible	14	W
3	Glassboro	31	L
26	King's	12	W
22	Muhlenburg	20	W
4	Lycoming	36	L
13	Juniata	21	L
10	Rider	31	L
3	Delaware Valley	37	L
17	Baptist Bible	24	L

1972-73 (3-6-1)

Coach: John Hopkins

Date	Royals	OPP	W/L
19	Susquehanna	25	L
17	Moravian	24	L
15	Binghamton	24	L
17	Glassboro	23	L
28	Baptist Bible	16	W
34	King's	9	W
4	Delaware Valley	38	L
18	Muhlenburg	18	T
3	Lycoming	38	L
22	Juniata	16	W
Middle Atlantic Conference Championships (15th-place)			

1973-74 (1-9)

Coach: John Hopkins

Date	Royals	OPP	W/L
6	Susquehanna	32	L
2	Moravian	44	L
24	Glassboro	21	W
15	Baptist Bible	32	L
3	Delaware Valley	45	L
3	Muhlenburg	43	L
9	Binghamton	33	L
5	Lycoming	48	L
15	Juniata	35	L
Middle Atlantic Conference Championships (16th-place)			

1974-75 (4-7)

Coach: John Hopkins

Date	Royals	OPP	W/L
21	Albright	24	L
9	Lebanon Valley	48	L
26	Baptist Bible	14	W
24	King's	22	W
3	Delaware Valley	46	L
23	Muhlenburg	26	L
29	Juniata	11	W
24	Susquehanna	20	W
12	Moravian	25	L
2	Univ. of Mass.	45	L
9	Lycoming	33	L
Middle Atlantic Conference Championships (12th-place)			

1975-76 (8-5)

Coach: John Hopkins

Date	Royals	OPP	W/L
30	Albright	18	W
16	Kutztown	29	L
21	Oneonta State	12	W
34	Johns Hopkins	9	W
13	Lebanon Valley	21	L
42	King's	9	W
24	Baptist Bible	18	W
34	Susquehanna	13	W
14	Delaware Valley	24	L

30	Muhlenburg	12	W
12	Lycoming	36	L
22	Juniata	17	W
20	Moravian	25	L
Middle Atlantic Conference Championships (9th-place)			

1976-77 (6-7)

Coach: John Hopkins

Date	Royals	OPP	W/L
26	Albright	18	W
28	Lebanon Valley	15	W
17	Baptist Bible	19	L
30	King's	18	W
8	Delaware Valley	35	L
22	Muhlenburg	24	L
12	Oneonta State	21	L
28	Susquehanna	21	W
9	Moravian	31	L
31	Ursinus	17	W
8	Lycoming	36	L
4	Kutztown State	39	L
26	Juniata	12	W
Middle Atlantic Conference Championships (7th-place)			

1977-78 (7-7)

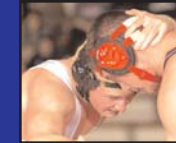
Coach: John Hopkins

Date	Royals	OPP	W/L
34	Albright	10	W
28	Lebanon Valley	14	W
34	Baptist Bible	12	W
25	King's	15	W
17	Delaware Valley	23	L
34	Muhlenburg	7	W
19	Oneonta State	18	W
8	Mansfield	34	L
14	Moravian	24	L
22	Ursinus	12	W
6	Lycoming	32	L
9	Kutztown State	27	L
16	California	23	L
19	Swarthmore	22	L
Middle Atlantic Conference Championships			

1978-79 (10-3)

Coach: John Hopkins

Date	Royals	OPP	W/L
48	Albright	6	W
48	Lebanon Valley	6	W
37	Baptist Bible	10	W
41	Kings	8	W
13	Delaware Valley	32	L
47	Muhlenburg	0	W
16	Oneonta State	23	L
42	Susquehanna	10	W
42	Moravian	10	W
50	FDU Madison	5	W
3	Lycoming	39	L



28	Kutztown State	6	W
19	Swarthmore	16	W
Middle Atlantic Conference Championships			

1979-80 (8-4)

Coach: John Hopkins

Date	Royals	OPP	W/L
42	Lebanon Valley	6	W
30	Baptist Bible	12	W
18	King's	21	L
23	Delaware Valley	19	W
42	Muhlenburg	10	W
25	Oneonta State	23	W
23	Susquehanna	25	L
29	Moravian	18	W
49	FDU-Madison	3	W
7	Lycoming	26	L
16	Kutztown State	15	W
22	Swarthmore	24	L
Middle Atlantic Conference Championships (5th-place)			

1980-81 (13-4)

Coach: John Hopkins

Date	Royals	OPP	W/L
40	Albright	12	W
30	Lebanon Valley	13	W
17	Baptist Bible	28	L
38	Kings	14	W
15	Delaware Valley	36	L
28	Muhlenburg	19	W
31	Oneonta State	18	W
23	Susquehanna	20	W
42	Moravian	6	W
42	FDU-Madison	11	W
18	Lycoming	27	L
34	Kutztown State	16	W
22	Swarthmore	18	W
17	Juniata	30	L
28	Elizabethtown	21	W
21	Mansfield	17	W
30	Ursinus	11	W
Middle Atlantic Conference Championships			

1981-82 (6-13)

Coach: John Hopkins

Date	Royals	OPP	W/L
41	Albright	6	W
9	Lebanon Valley	32	L
22	Baptist Bible	30	L
27	King's	15	W
12	Ithaca	33	L
18	Muhlenburg	28	L
20	Oneonta State	24	L
24	Susquehanna	26	L
19	Moravian	30	L
39	FDU-Madison	3	W
6	Lycoming	46	L
27	Towson State	9	W

14	Swarthmore	32	L
17	Juniata	26	L
21	Elizabethtown	29	L
25	Mansfield	24	W
29	Ursinus	18	W
23	Kutztown	24	L
0	Delaware Valley	50	L
Middle Atlantic Conference Championships (10th-place)			

1982-83 (2-10)

Coach: John Hopkins

Date	Royals	OPP	W/L
18	Albright	36	L
27	Lebanon Valley	22	W
33	Baptist Bible	14	W
23	King's	28	L
0	Ithaca	48	L
22	Muhlenburg	25	L
21	Kean State	30	L
26	Susquehanna	27	L
26	Moravian	27	L
4	Lycoming	45	L
17	Mansfield	34	L
15	Kutztown	37	L
Middle Atlantic Conference Championships (18th-place)			

1983-84 (11-6)

Coach: John Hopkins

Date	Royals	OPP	W/L
52	Albright	0	W
16	Lebanon Valley	28	L
47	RPI	3	W
38	King's	16	W
44	Kean State	9	W
23	Muhlenburg	15	W
35	Elizabethtown	17	W
23	Susquehanna	21	W
9	Moravian	31	L
16	Lycoming	30	L
38	Mansfield	3	W
29	Swarthmore	15	W
54	Messiah	0	W
23	Ursinus	26	L
42	Juniata	7	W
Middle Atlantic Conference Championships			

1984-85 (11-7)

Coach: John Hopkins

Date	Royals	OPP	W/L
34	Albright	21	W
20	Lebanon Valley	25	L
29	Upsala	17	W
35	King's	18	W
30	Kean State	22	W
33	Muhlenburg	15	W
52	Elizabethtown	3	W
33	Susquehanna	15	W
17	Moravian	24	L

14	Lycoming	28	L
23	Washington & Lee	29	L
35	Swarthmore	13	W
35	La Salle	10	W
21	Ursinus	24	L
50	Juniata	5	W
8	Delaware Valley	50	L
21	Oneonta State	29	L
44	Baptist Bible	12	W
Middle Atlantic Conference Championships (8th-place)			

1985-86 (11-9-1)

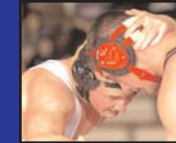
Coach: John Hopkins

Date	Royals	OPP	W/L
44	Albright	6	W
30	Lebanon Valley	21	W
27	Upsala	23	W
20	King's	29	L
54	Eastern	4	W
55	Muhlenburg	12	W
21	Elizabethtown	27	L
21	Susquehanna	30	L
14	Moravian	27	L
9	Lycoming	47	L
43	Messiah	12	W
45	Swarthmore	6	W
23	Widener	18	W
12	Ursinus	28	L
46	Juniata	6	W
7	Delaware Valley	40	L
18	Oneonta State	32	L
46	Baptist Bible	6	W
24	Elizabethtown	23	W
16	W. New England	32	L
21	W. Maryland	21	T
Middle Atlantic Conference Championships			

1986-87 (11-4)

Coach: John Hopkins

Date	Royals	OPP	W/L
45	Upsala	7	W
24	King's	19	W
40	Muhlenburg	14	W
33	Elizabethtown	18	W
42	Susquehanna	8	W
24	Moravian	21	W
16	Lycoming	22	L
36	Messiah	13	W
22	Washington & Lee	15	W
44	Wilkes CC	6	W
20	Ursinus	25	L
46	Juniata	3	W
4	Delaware Valley	50	L
14	Oneonta State	32	L
45	Baptist Bible	9	W
Middle Atlantic Conference Championships (5th-place)			



1987-88 (9-5-1)

Coach: Steve Laidacker
(Hopkins on sabbatical)

15	Muhlenburg	30	L
7	Juniata	35	L
15	Ursinus	38	L

Middle Atlantic Conference
Championships (17th-place)

1988-89 (9-8)

Coach: John Hopkins

Date	Royals	OPP	W/L
30	Winston Salem St.	19	W
19	Campbell	24	L
31	Liberty	14	W
21	Pembroke	22	L
14	Oneonta State	29	L
23	Messiah	21	W
17	King's	28	L
31	Susquehanna	15	W
9	Moravian	36	L
47	Lebanon Valley	12	W
42	Haverford	6	W
12	Lycoming	35	L
38	Baptist Bible	6	W
27	Muhlenburg	18	W
36	Juniata	8	W
12	Delaware Valley	36	L
18	Ursinus	29	L

Middle Atlantic Conference
Championships

1991-92 (3-14)

Coach: John Hopkins

Date	Royals	OPP	W/L
9	Oneonta	34	L
20	Messiah	36	L
12	King's	26	L
10	Lebanon Valley	33	L
7	Moravian	36	L
12	Susquehanna	32	L
24	Upsala	17	W
6	Wesleyan	35	L
21	USMMA	25	L
29	UMass.-Boston	15	W
9	Norwich	35	L
12	Lycoming	33	L
48	Baptist Bible	6	W
9	Juniata	34	L
11	Elizabethtown	35	L
5	Muhlenburg	39	L
19	Ursinus	32	L

Middle Atlantic Conference
Championships (13th-place)

1993-94 (5-13)

Coach: John Hopkins

Date	Royals	OPP	W/L
12	Luther	28	L
12	Olivet	31	L
6	Simpson	33	L
12	Ursinus	30	L
57	Haverford	0	W
21	Oneonta	24	L
9	Augsburg	34	L
26	Lebanon Valley	18	W
12	King's	27	L
23	Juniata	24	L
27	Elizabethtown	18	W
33	Albright	9	W
16	Lycoming	34	L
21	Upsala	22	L
0	Delaware Valley	46	L
33	Susquehanna	10	W
18	Messiah	25	L
24	Baptist	27	L

Middle Atlantic Conference
Championships (10th-place)

1989-90 (2-11)

Coach: John Hopkins

Date	Royals	OPP	W/L
10	Oneonta	34	L
20	Messiah	32	L
21	King's	24	L
9	Moravian	35	L
8	Susquehanna	36	L
15	Lebanon Valley	33	L
0	Lycoming	59	L
14	La Salle	31	L
31	Baptist Bible	21	W
18	Elizabethtown	30	L
27	Muhlenburg	15	W
20	Juniata	25	L
5	Delaware Valley	45	L

Middle Atlantic Conference
Championships (15th-place, tie)

1992-93 (9-20)

Coach: John Hopkins

Date	Royals	OPP	W/L
9	Olivet	36	L
34	Concordia	16	W
25	Johns Hopkins	24	W
15	Case Western	34	L
3	Simpson	45	L
21	Millikin	33	L
0	N. C. State	46	L
0	Pembroke	51	L
3	Georgia State	44	L
33	Citadel	24	W
9	Kean	31	L
34	Messiah	14	W
9	King's	34	L
9	Moravian	34	L
10	Lebanon Valley	29	L
15	Susquehanna	33	L
25	Upsala	21	W
16	Trinity	27	L
37	U. Mass.-Boston	18	W
17	WPI	31	L
2	Lycoming	40	L
24	Baptist Bible	27	L
54	Lancaster Bible	4	W
58	Practical Bible	0	W
18	Muhlenburg	28	L
23	Juniata	28	L
31	Elizabethtown	22	W
21	Ursinus	25	L
16	Oneonta	27	L

1994-95 (4-15)

Coach: John Hopkins

Date	Royals	OPP	W/L
21	St. John's	28	L
12	Olivet	33	L
6	Augsburg	39	L
12	North Central	39	L
9	Simpson	40	L
6	Ursinus	44	L
10	Oneonta	34	L
31	Albright	22	W
12	Delaware Valley	35	L
39	Lebanon Valley	12	W
18	Moravian	28	L
18	King's	24	L
21	Juniata	25	L
10	Gettysburg	33	L
28	Baptist Bible	20	W
25	Elizabethtown	21	W
9	Lycoming	38	L
15	Susquehanna	30	L
6	Messiah	36	L

Middle Atlantic Conference
Championships (7th-place)

1990-91 (4-12)

Coach: John Hopkins

Date	Royals	OPP	W/L
10	Oneonta	37	L
28	Plymouth State	24	W
31	Messiah	21	W
22	King's	30	L
17	Moravian	34	L
15	Susquehanna	25	L
19	Lebanon Valley	27	L
28	UMass.-Boston	22	W
12	Wesleyan	36	L
13	USMMA	37	L
47	Baptist Bible	9	W
12	Elizabethtown	33	L

1995-96 (11-11)

Coach: John Hopkins

Date	Royals	OPP	W/L
0	Messiah	34	
30	Muhlenburg	19	
37	Susquehanna	15	
21	North Central	19	
6	Olivet	32	
40	Susquehanna	10	



22	Wis-Stout	24
13	Monmouth	25
25	Apprentice School	20
3	Lycoming	38
6	Ursinus	35
6	Oneonta	30
32	Albright	15
0	Delaware Valley	47
36	Johns Hopkins	9
8	York	39
31	Rutgers-Camden	19
19	King's	21
26	Lebanon Valley	13
49	Baptist Bible	3
12	Lycoming	41
36	Elizabethtown	13
Middle Atlantic Conference Championships (4th-place)		

1996-97 (6-12-1)

Coach: John Hopkins

Date	Royals	OPP	W/L
15	DuBuque	24	L
12	Coe	39	L
42	Lakeland	10	W
12	Olivet	36	L
18	Western Maryland	24	L
19	Ursinus	28	L
19	Oneonta	27	L
3	Delaware Valley	48	L
33	Albright	12	W
20	Lebanon Valley	21	L
13	King's	36	L
29	Johns Hopkins	28	W
25	LaSalle	25	T
54	Galludet	0	W
54	Haverford	0	W
48	Baptist Bible	12	W
0	Messiah	50	L
12	Elizabethtown	35	L
3	Lycoming	46	L
Middle Atlantic Conference Championships (6th-place)			

1997-98 (8-9)

Coach: John Hopkins

Date	Royals	OPP	W/L
D9	6 Elizabethtown	42	L
	60 St. Joseph's (fft)	0	W
	30 Dubuque	18	W
	31 Elmhurst	22	W
	9 Olivet	38	L
	36 Lakeland	16	W
J8	12 Oneonta St.	40	L
J10	12 York	35	L
J16	10 King's	33	L
J17	27 Albright	18	W
J24	at Washington & Lee Invitational (3rd-place)		
J29	45 Baptist Bible	6	W
J30	36 Lebanon Valley	15	W

J31	5 Delaware Valley	39	L
F6	12 Messiah	42	L
F7	13 Ursinus	31	L
F7	36 Wilkes	16	W
F7	6 Lycoming	46	L
F14	at Middle Atlantic Conference Championships (8th-place)		
F21	at NCAA East Regional (11th-place)		

1998-1999 (5-12)

Coach: Steve Laidacker

Date	Royals	OPP	W/L
D4	at Petrofes Invitational (Lebanon Valley) (9th-place, 19 teams)		
D10	29 Albright	15	W
D10	21 Muhlenburg	24	L
at Citrus Duals Ft. Lauderdale, Fla.			
D29	3 vs. Olivet	36	L
D29	18 vs. Central Iowa	24	L
D30	46 vs. Elmhurst	8	W
D30	18 vs. Dubuque	24	L
J8	15 Longwood	29	L
J8	28 Coast Guard	12	W
J12	50 Baptist Bible	0	W
J16	at Swarthmore Invitational		
J19	15 King's	36	L
J23	at Washington & Lee Invitational		
J26	14 Delaware Valley	36	L
F5	13 Messiah	35	L
F6	6 Wilkes	39	L
F6	12 Lycoming	34	L
F10	18 Oneonta	28	L
F13	30 Lebanon Valley	15	W
F13	15 Elizabethtown	36	L
F20	at Middle Atlantic Conference Championships (7th-place)		

1999-2000 (8-14)

Coach: Steve Laidacker

Date	Royals	OPP	W/L
N20	at Red Dragon Invitational (Oneonta St.) (no team scoring)		
D3/4	at Petrofes Invitational (Lebanon Valley) (10th-place, 19 teams, 49 points)		
D9	24 ALBRIGHT	23	W
D31	at Citrus Duals		
	18 vs. NYU	27	L
	3 vs. Olivet	52	L
	33 vs. Wilmington	22	W
	21 vs. Lakeland	27	L
	12 vs. Coast Guard	33	L
J8	at North/South Duals		
	35 vs. M.I.T.	9	W
	33 vs. W. New England	19	W
	18 vs. Bridgewater	22	L
	15 vs. Trinity	25	L

J13	13 KING'S	30	L
J16	at Swarthmore Invitational (4th-place, 12 teams)		
J19	28 Muhlenburg	22	W
J19	32 Centenary	18	W
J22	at Washington & Lee Invitational (4th-place, 8 teams, 52 points)		
J29	9 Delaware Valley	33	L
J29	3 Lycoming	46	L
F3	32 Baptist Bible	6	W
F5	5 Messiah	47	L
F5	6 Wilkes	45	L
F9	21 ONEONTA ST.	24	L
F9	41 LEB. VALLEY	5	W
F12	12 GETTYSBURG	33	L
F12	15 ETOWN	35	L
F18-19	MIDDLE ATLANTIC CONFERENCE CHAMPIONSHIPS (7TH-PLACE, 8 TEAMS, 22 POINTS)		

2000-2001 (10-14)

Coach: Steve Laidacker

Date	Royals	OPP	W/L
N18	at Red Dragon Invitational (Oneonta St.) (3rd-place, 10 teams, 58 points)		
N21	27 Elizabethtown	14	W
D2	SCRANTON INVITATIONAL (5TH-PLACE, 9 TEAMS, 52 POINTS)		
D6	27 Albright	24	W
D30	at Citrus Holiday Tournament (6th-place, 12 teams, 46.5 points)		
D31	3 vs. Olivet	42	L
D31	3 vs. Central College	36	L
D31	36 vs. Rhode Isl. Co.	9	W
D31	32 Wilmington	19	W
D31	1 Concordia (fft.)	0	W
J6	at North/South Duals		
	7 Wesleyan	37	L
	34 W. New England	13	W
	31 M.I.T.	9	W
	15 Bridgewater St.	42	L
J11	8 King's	45	L
J13	42 Gallaudet	12	W
J13	6 Davidson	28	L
J17	15 Muhlenberg	31	L
J20	at Washington & Lee Invitational (7th-place, 8 teams, 37.5 points)		
J27	3 DEL. VALLEY	43	L
F3	33 vs. Centenary	12	W
F3	42 at Baptist Bible	15	W
F3	6 vs. Messiah	37	L
F4	3 THE CO. OF NJ	41	L
F4	6 *LYCOMING	42	L
F4	19 *WILKES	27	L
F7	13 at Oneonta St.	30	L
F10	13 at Gettysburg	36	L
F16/17	at Middle Atlantic Conference		



	Championships (6th-place, 8 teams, 17 points)		13 vs. R.I.T.	35 L	F4 9	ONEONTA ST.	39 L
			20 Oswego St.	30 L	F8 6	at The Co.	
		J10	at Budd Whitehill National Duals (Lycoming College)		F13 28	of New Jersey	44 L
2001-2002 (7-14)			vs. The Co. of N.J.	40 L	22	N.Y. MARITIME	22 W
Coach: Steve Laidacker		J10 6	vs. Augustana	32 L	F14 9	vs. Lycoming	45 L
Date Royals	OPP W/L	J11	at Budd Whitehill National Duals (Lycoming College)		F14 26	vs. Gettysburg	16 W
N17	at Red Dragon Invitational (Oneonta State College, Oneonta, N.Y.) (8th place, 10th team, 33 points)		22 vs. Baldwin-Wallace	31 L	F20/21	MIDDLE ATLANTIC CONFERENCE	
D1	SCRANTON INVITATIONAL (5TH PLACE, 11 TEAMS, 43.5 POINTS)	J14 15	28 vs. Case Western	7 W		CHAMPIONSHIPS (6TH-PLACE, 8 TEAMS, 50 POINTS)	
D5 30	ALBRIGHT 18 W	J18	at Washington & Lee Invitational (2nd place, 8 teams, 75 points)				
D29	Citrus Open (Florida) (19th place, 19 teams, 14 points)	J25 12	*KING'S	31 L			
D30	Citrus Duals (Florida)	J29 24	SHIPPENSBURG 21 W			2004-2005 (10-9)	
0	Heidelberg 42 L	F1	at Middle Atlantic Conference North/South Duals (Lycoming College)			Coach: Brett Owen	
30	Rose-Hulman 12 W		36 vs. Albright	15 W		Date Royals	OPP W/L
20	Concordia-Minn. 9 W		46 vs. Elizabethtown	6 W	N13	at Monarch Invitational (7th place, 11 teams, 116.5 points)	
J5	at New York/Pennsylvania Duals (Oswego, NY)		18 vs. Delaware Valley	29 L	N20	at Red Dragon Invitational (6th place, 9 teams, 76.5 points)	
15	RIT 35 L	F5 16	12 vs. Messiah	33 L	D2 12	at Lycoming	34 L
10	Cortland St. 34 L	F8	at Oneonta St.	29 L	D5	SCRANTON INVITATIONAL (no team scoring)	
3	Oswego St. 42 L		at Ursinus Tune-Up Tournament (2nd place, 5 teams, 67.5 points)		J8	at New York/Pennsylvania Duals	
J11/12	at Budd Whitehill National Duals (Lycoming College)	F9 4	THE CO. OF N.J.	39 L	22	vs. RIT	21 W
J11 4	John Carroll 41 L	F15 22	vs. Wilkes	25 L	24	vs. Cortland	22 W
J11 37	Elizabethtown 17 W		35 at Gettysburg	9 W	9	vs. Oswego	38 L
J12 0	Augustana 49 L		12 vs. Lycoming	33 L	J12 40	at Muhlenberg	12 W
J12 22	R.I.T. 25 L	F21/22	at Middle Atlantic Conference Championships (King's College) (6th place, 8 teams, 79.5 points)		J15	at Washington & Lee Invitational (1st place, 12 teams, 68 points)	
J15 16	MUHLENBERG 30 L				J19 0	SHIPPENSBURG 45 L	
J19	at Washington & Lee Invitational (no team scoring)				J26 24	KING'S 14 W	
J26 7	Delaware Valley 39 L	2003-2004 (4-18)			J29	at Middle Atlantic Conference Duals	
F2 36	vs. Baptist Bible 18 W	Coach: Brett Owen				42 vs. Albright	15 W
39	vs. Centenary 10 W	Date Royals	OPP W/L		9	vs. Delaware Valley	39 L
9	Messiah 38 L	N22	Red Dragon Invitational (Oneonta, N.Y.) (10th place, 10 teams, 22 points)		12	vs. Messiah	27 L
F3 6	The Co. of N.J. 40 L		at New York/Pennsylvania Duals		F2 39	vs. Elizabethtown	13 W
F7 9	ONEONTA ST. 33 L	J3	9 vs. Oswego	33 L	38	vs. Baptist Bible	6 W
F9 42	vs. Gettysburg 12 W		12 vs. Cortland St.	39 L	10	at Centenary	37 L
6	at Lycoming 46 L		18 vs. R.I.T.	33 L	F5 27	at Stevens Tech	9 W
11	vs. Wilkes 29 L	J7 10	OLIVET 30 L		F6 6	THE CO. OF N.J.	44 L
F15/16	at Middle Atlantic Conference Championships (Messiah College, Grantham, Pa.) (6th place, 8 teams, 20 points)	J16	PLYMOUTH ST. 23 L		F12 13	ONEONTA ST.	31 L
		J9/10	at Budd Whitehill National Duals		21	WILKES	25 L
		J9 12	vs. Springfield	30 L	27	GETTYSBURG	21 W
		J9 17	vs. Thiel	22 L	39	SUNY-MARITIME	6 W
		J10 13	vs. Muskingum	27 L	F19	at Middle Atlantic Conference Championships (Wilkes University, 7th place, 8 teams, 40.5 points)	
		J10 6	vs. Chicago	36 L			
		J15 36	MUHLENBERG 15 W				
2002-2003 (5-13)		J17	at Washington & Lee Invitational (4th place, 6 teams, 48 points)				
Coach: Brett Owen		J24 16	at King's	35 L			
Date Royals	OPP W/L	J28 3	at Shippensburg	46 L			
N16	at Roger Williams Invitational (12th place tie, 17 teams, 30.5 points)	J31	at Middle Atlantic Conference Duals				
N23	at Red Dragon Invitational (Oneonta, N.Y.) (10th place, 10 teams, 39 points)		26 vs. Elizabethtown	19 W			
D8	SCRANTON INVITATIONAL (4th place, 6 teams, 103.5 points)		0 vs. Delaware Valley	55 L			
J4	at Pennsylvania/New York Duals (King's College)		14 vs. Messiah	28 L			
			21 vs. Albright	31 L			



2005-2006 (2-12)

Coach: Jim Morgan

Date	Royals	Opp	W/L
N12		at Monarch Invitational (King's College) (9th place, 12 teams, 63 points)	
N19		at Red Dragon Invitational (Oneonta State) (10th place tie, 11 teams, 29.5 points)	
N30	6	LYCOMING	40 L
D4		SCRANTON INVITATIONAL (6TH PLACE, 9 TEAMS, 53.5 POINTS)	
D8	15	at Messiah	33 L
J7		at New York/Pennsylvania Duals (Rochester)	
	14	at R.I.T.	35 L
	6	vs. Cortland	47 L
	9	vs. Oswego	44 L
J11	18	ONEONTA	30 L
J14		at Washington & Lee Invitational (2nd place, 12 teams, 50.5 points)	
J18	6	at Shippensburg	38 L
J19	9	STEVENS TECH	28 L
J25	9	at King's	39 L
J26	3	DEL. VALLEY	44 L
J28		MAC DUALS (LONG CENTER)	
	25	ETOWN	21 W
F1	23	CENTENARY	34 L
F5	5	at The Co. of New Jersey	44 L
F11	27	*at Wilkes	26 W
F18		at Middle Atlantic Conference Championships (Elizabethtown, Pa) (6th place, 7 teams, 50.5 points)	

(8th place, 10 teams, 24 points)
(The College of New Jersey)

2007-2008 (2-13)

Coach: Al Russomano

Date	Royals	OPP	W/L
N4		at Washington & Jefferson Inv.	
N10		Monarch Invitational	
N13	7	at Wilkes	41 L
N14	9	LYCOMING	39 L
N17		Red Dragon Invitational (Oneonta State University) (12th-place, 12 teams, 29.5 points)	
D4	16	at King's	24 L
D8	6	at Elizabethtown	47 L
J12		at Washington & Lee Invitational (5th-place, 14 teams, 51 points)	
J16	9	at Muhlenberg	42 L
J19		at York College Quad Meet	
	0	at York	51 L
	21	vs. Apprentice Sch.	29 L
	3	vs. Wilkes	45 L
J26	0	at Centenary	48 L
F9	9	OSWEGO	39 L
	0	TCNJ	53 L
F16	27	HUNTER	20 W
	3	NYU	39 L
	20	MORRISVILLE	18 W
F24		at Metropolitan Wrestling Conference Championships (9th-place, 9 teams, 9.5 points) (Wilkes University)	

2006-2007 (0-7)

Coaches: Bob Marzatta (0-2)/Al Russomano
(0-5)

Date	Royals	OPP	W/L
N11		at Monarch Invitational (King's College) (10th Place, 12 teams, 65.5 points)	
N15	9	at Lycoming	42 L
N18		at Red Dragon Inv. (Oneonta St.) (10th place, 13 teams, 38.5 points)	
D7	7	at Messiah	36 L
J13		at Washington & Lee Invitational (4th place, 14 teams. 47.5 points)	
J27	9	CENTENARY (NJ)	41 L
	3	WILKES	47 L
F3	0	THE CO. OF N.J.	51 L
	3	OSWESO ST.	44 L
F7	3	KING'S	50 L
F18		at Metropolitan Wrestling Championships	