

1982 (10-2)

Head Coach: Mike Strong

Date	Royals	Opp	W/L
8	Muhlenberg	1	W
9	Hartwick	0	W
8	Lycoming	1	W
9	Ursinus	0	W
6	King's	3	W
9	FDU-Madison	0	W
9	Wilkes	0	W
7	Drew	2	W
8	Susquehanna	1	W
7	King's	2	W
2	Upsala	7	L
1	Bloomsburg	8	L

1983 (5-11)

Head Coach: Ted Christy

Date	Royals	Opp	W/L
2	Muhlenberg	7	L
5	Elizabethtown	4	W
0	Bloomsburg	9	L
9	Wilkes	0	W
7	King's	2	W
1	Villanova	8	L
4	Lycoming	5	L
4	St. John Fisher	5	L
3	Susquehanna	6	L
9	Wilkes	0	W
4	Albright	5	L
2	Upsala	7	L
4	King's	5	L
4	Drew	5	L
9	FDU-Madison	0	W
2	Lehigh	7	L

1984 (9-4)

Head Coach: Ted Christy

Date	Royals	Opp	W/L
5	Muhlenberg	4	W
9	Wilkes	0	W
9	Elizabethtown	0	W
8	Lycoming	1	W
2	Drew	7	L
7	FDU-Madison	2	W
4	King's	5	L
5	King's	4	W
9	Wilkes	0	W
0	Upsala	6	L
7	St. Joseph's	2	W
0	Bloomsburg	9	L
7	Albright	2	W

1986 (2-11)

Head Coach: Ted Christy

Date	Royals	Opp	W/L
2	Muhlenberg	7	L
2	King's	7	L
1	LaSalle	8	L

0	Drew	9	L
2	Elizabethtown	7	L
1	Upsala	8	L
0	Villanova	9	L
1	FDU-Florham	8	L
8	Wilkes	1	W
0	Bloomsburg	9	L
2	Albright	7	L
6	Wilkes	3	W
3	Susquehanna	6	L

1987 ()

Head Coach: Ted Christy

Date	Royals	Opp	W/L
5	vs. Wis.-Platteville	4	W
7	vs. Webber (Fla.)	2	W
4	vs. Southeastern (Fla.)	4	L
M23	Lycoming	0	W
M26	Wilkes	1	W
M28	Elizabethtown	4	W
A9	FDU-MADISON	0	W
A23	FDU-Madison	3	W

*Editor's Note: some results missing

1989 (5-7)

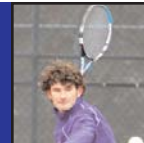
Head Coach: Ted Christy

Date	Royals	Opp	W/L
4	Oneonta St.	5	L
1	East Stroudsburg	8	L
2	Drew	7	L
6	Upsala	3	W
2	King's	7	L
6	FDU-Madison	3	W
2	Muhlenberg	7	L
8	Wilkes	1	W
5	Moravian	4	W
1	Susquehanna	8	L
2	LaSalle	7	L
7	Wilkes	2	W

1991 (8-4)

Head Coach: John Seitzinger

Date	Royals	Opp	W/L
1	King's	8	L
0	King's	9	L
2	Drew	7	L
9	Upsala	0	W
4	Elizabethtown	5	L
8	FDU-Madison	1	W
8	Wilkes	1	W
5	Muhlenberg	4	W
5	Moravian	4	W
5	Susquehanna	1	W
6	Albright	3	W
8	Wilkes	1	W



1992 (4-8)

Head Coach: John Seitzinger

Date	Royals	Opp	W/L
2	King's	7	L
1	Drew	8	L
4	Moravian	5	L
1	King's	8	L
1	Elizabethtown	8	L
8	FDU-Madison	0	W
4	Muhlenberg	5	L
6	Upsala	3	W
5	Albright	4	W
6	Wilkes	3	W
2	Rutgers-Newark	7	L
2	Susquehanna	7	L

1993 (3-9)

Head Coach: John Seitzinger

Date	Royals	Opp	W/L
M15	8 vs. Illinois Benedictine	1	W
M16	1 vs. Hamilton	8	L
M18	0 vs. Western Illinois	9	L
M19	3 vs. Union (Ky.)	6	L
M30	3 KING'S	6	L
A6	2 MORAVIAN	7	L
A14	1 at Drew	8	L
A17	3 at Susquehanna	6	L
A17	1 RUTGERS-NEWARK	8	L
A18	7 FDU-MADISON	2	W
A24	6 SCRANTON	3	W
A27	1 ALBRIGHT	8	L

1994 (9-4)

Head Coach: John Seitzinger

Date	Royals	Opp	W/L
8	Marywood	1	W
9	Upsala	0	W
2	King's	6	L
5	Elizabethtown	4	W
5	Drew	4	W
5	Moravian	4	W
4	Susquehanna	5	L
8	Lycoming	1	W
8	East Stroudsburg	1	W
9	Wilkes	0	W
6	FDU-Madison	3	W
4	Albright	5	L
2	King's	7	L

1995 (8-9)

Head Coach: John Seitzinger

Date	Royals	Opp	W/L
1	Binghamton	7	L
4	St. John's	5	L
1	Livingston	8	L
5	Wilkes	4	W
7	Lycoming	1	W
9	Marywood	0	W
5	Elizabethtown	4	W
3	Drew	6	L

0	Stony Brook	9	L
6	Moravian	3	W
6	FDU-Madison	3	W
9	Upsala	0	W
4	King's	5	L
2	Susquehanna	7	L
8	Marywood	1	W
4	East Stroudsburg	5	L
4	Albright	5	L

1996 (8-7)

Head Coach: John Seitzinger

Date	Royals	Opp	W/L
5	Moravian	4	W
4	FDU-Madison	5	L
9	Marywood	0	W
3	West Chester	4	L
4	Catholic	5	L
1	Mary Washington	6	L
6	Elizabethtown	3	W
5	Lycoming	1	W
2	Stony Brook	5	L
9	Marywood	0	W
9	Wilkes	0	W
5	King's	4	W
5	Drew	4	W
4	Albright	5	L
4	Susquehanna	5	L

1997 (10-2/3-2 MAC)

Head Coach: John Seitzinger

Date	Royals	Opp	W/L
9	Marywood	0	W
6	Wilkes	3	W
7	Moravian	2	W
6	Elizabethtown	3	W
8	Lycoming	1	W
6	Marywood	1	W
9	King's	0	W
8	East Stroudsburg	1	W
4	FDU-Madison	5	L
8	Albright	1	W
7	Susquehanna	2	W
2	Drew	7	L

1998 (9-6/*5-1 MAC Freedom)

Head Coach: Jonathan Katchmore

Date	Royals	Opp	W/L
M12	4 Moravian	5	L
M26	7 Marywood	0	W
M28	9 *Allentown	0	W
M29	3 West Chester	6	L
M30	5 *King's	4	W
A5	5 *FDU-Madison	4	W
A7	3 Elizabethtown	6	L
A8	*Lycoming (fft.)		W
A14	6 Marywood	3	W
A15	9 *Wilkes	0	W
A17	8 East Stroudsburg	1	W
A18	3 *Drew	6	L



A21	2	Albright	7	L
A23	8	Susquehanna	1	W
A25	0	#Albright	6	L

#Middle Atlantic Conference Tournament (Semifinals)

1999 (9-4/*5-0 MAC Freedom)

Head Coach: Jonathan Katchmore

Date	Royals		Opp	W/L
M25	9	*Allentown	0	W
M28	7	Siena	2	W
M29	0	Trinity	7	L
M31	8	St. Mary's	1	W
A1	6	St. John's (Minn.)	3	W
A7	7	*Lycoming	2	W
A10	3	West Chester	6	L
A13	9	Marywood (fft.)	0	W
A14	6	*Wilkes	3	W
A15	7	*King's	2	W
A17	7	*Drew	2	W
A20	4	Albright	5	L
A25	4	#Albright	5	L

#Middle Atlantic Conference Tournament (Semifinals)

2000 (10-2/*5-1 MAC Freedom)

Head Coach: Jack Lennox

Date	Royals		Opp	W/L
M20	6	*ALLENTOWN	1	W
M23	7	MARYWOOD	0	W
A1	4	*at Drew	3	W
A6	9	at East Stroudsburg	0	W
A8	6	*LYCOMING	1	W
A12	7	*at Wilkes	2	W
A14	6	SUSQUEHANNA	1	W
A15	7	*FDU-MADISON	0	W
A16	4	RUTGERS-NEWARK	3	W
A19	3	*at King's	6	L
A24	4	#Lebanon Valley	3	W
A25	2	@at King's	5	L

#Middle Atlantic Conference Tournament (Semifinal)

@Middle Atlantic Conference Championship

2001 (5-5/3-3 Freedom Conference)

Head Coach: Jack Lennox

Date	Royals		Opp	W/L
M12	6	vs. Gordon College	3	W
M14	2	vs. St. Lawrence	7	L
M15	0	vs. Quinnipiac	7	L
M19	5	*at DeSales	2	W
M31	0	*DREW	7	L
A4	4	*at FDU-Madison	3	W
A8	3	*at Lycoming	4	L
A10	7	*WILKES	0	W
A19	0	*KING'S	7	L
A25	5	EAST STROUDSBURG	2	W

HOME MATCHES IN CAPS

*Freedom Conference Matches

2002 (3-9/1-5 Freedom Conference)

Head Coach: Jack Lennox

Date	Royals		Opp	W/L
M13	7	MARYWOOD	0	W
M19	0	WEST CHESTER	7	L
M21	0	*at Drew	7	L
M23	2	*DeSALES	5	L
A1	5	at Susquehanna	2	W
A4	0	at Lebanon Valley	7	L
A6	5	*LYCOMING	2	W
A7	0	at Moravian	7	L
A10	2	*at King's	5	L
A16	2	*at Wilkes	5	L
A17	2	*FDU-MADISON	4	L
A18	1	EAST STROUDSBURG	8	L

HOME MATCHES IN CAPS

*Freedom Conference Matches

2003 (4-6/2-4 Freedom Conference)

Head Coach: Jack Lennox

Date	Royals		Opp	W/L
M22	1	*at DeSales	6	L
M23	1	*DREW	6	L
M25	6	at Marywood	1	W
M29	1	at Arcadia	5	L
A3	1	LEBANON VALLEY	6	L
A5	5	*at Lycoming	1	W
A6	4	*MORAVIAN	3	W
A10	2	*KING'S	5	L
A12	4	*at FDU-Florham	3	W
A15	1	*WILKES	6	L

HOME MATCHES IN CAPS

*Freedom Conference Matches

2004 (6-6/*4-2 Freedom Conference)

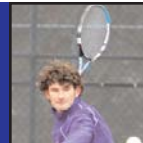
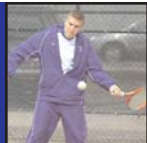
Head Coach: Jack Lennox

Date	Royals		Opp	W/L
M12	3	at Pace	4	L
M13	3	at Baruch	4	L
M20	4	*at Lycoming	3	W
M24	6	*KING'S	1	W
M27	5	at Cabrini	2	W
M29	2	at Moravian	5	L
M30	7	KEYSTONE	0	W
A1	0	*at Drew	7	L
A3	4	*FDU-FLORHAM	3	W
A6	2	at Lebanon Valley	5	L
A8	4	*DeSALES	3	W
A15	1	*at Wilkes	6	L

2005 (4-6/*3-3 Freedom Conference)

Head Coach: Jack Lennox

Date	Royals		Opp	W/L
M30	5	*at King's	2	W
A6	2	ONEONTA ST.	5	L
A8	0	*DREW	7	L
A9	4	*at FDU-Florham	3	W



A10	3	LEBANON VALLEY	4	L
A12	3	MARYWOOD	4	L
A14	2	*at DeSales	5	L
A16	6	*LYCOMING	1	W
A17	4	MORAVIAN	3	W
A19	2	*WILKES	5	L

#Landmark Conference Tournament (Semifinals)
HOME MATCHES IN CAPS

2006 (2-8/*1-5 Freedom Conference)

Head Coach: Jack Lennox

Date	Royals	Opp	W/L
M16	3 at Marywood	4	L
M25	0 *at Drew	7	L
M26	3 at Moravian	4	L
M28	7 at Keystone	0	W
M29	2 *at Wilkes	5	L
M31	1 *FDU-FLORHAM	6	L
A5	1 *KING'S	6	L
A8	3 *at Lycoming	4	L
A9	0 at Lebanon Valley	9	L
A10	6 *DeSALES	1	W

2007 (5-6/*2-4 Freedom Conference)

Head Coach: Keith Hetsko

Date	Royals	Opp	W/L
M11	3 vs. Defiance (Ohio)	6	L
M12	9 vs. Hood	0	W
M13	5 vs. Eastern Nazarene	4	W
M24	0 *at FDU-Florham	9	L
M28	7 *at DeSales	2	W
M30	0 *DREW	9	L
A2	8 KEYSTONE	1	W
A9	1 MORAVIAN	8	L
A10	0 *at King's	9	L
A13	1 *WILKES	8	L
A14	6 *LYCOMING	3	W

2008 (11-7/*5-2 Landmark Conference)

Head Coach: Keith Hetsko

Date	Royals	Opp	W/L
S15-16	at Goucher Invitational		
S29-30	at Wilson ITA Southeast Regional		
O20	7 RAMAPO	2	W
M16	2 vs. Wisconsin-Eau Claire	7	L
M17	7 vs. Heibelberg	2	W
M18	3 vs. Allegheny	6	L
M19	3 vs. Grove City	6	L
M20	8 vs. Greenville	1	W
M21	4 vs. Messiah	4	T
M24	4 *CATHOLIC	5	L
M29	8 *at Susquehanna	1	W
A2	6 JUNIATA	3	W
A5	6 *USMMA	3	W
A6	8 KING'S	1	W
A8	6 *MORAVIAN	3	W
A12	8 *at Goucher	1	W
A14	9 at Keystone	0	W
A15	3 at Oneonta St.	6	L
A17	9 BAPTIST BIBLE	0	W
A19	3 *at Drew	6	L
A23	3 #at Catholic	6	L